

EK series



stable      precision  
efficient    energy conservation

# HUNG YEE

中國金美威世界揚名錄 建森

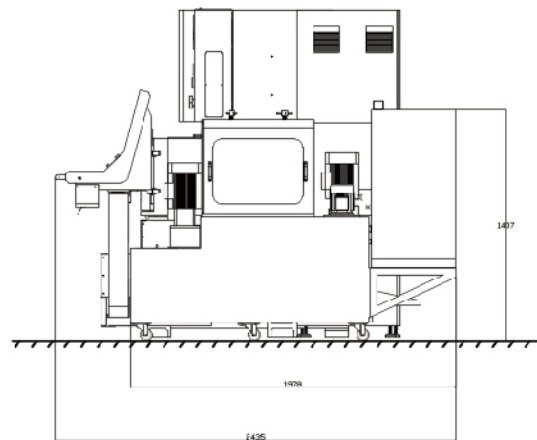
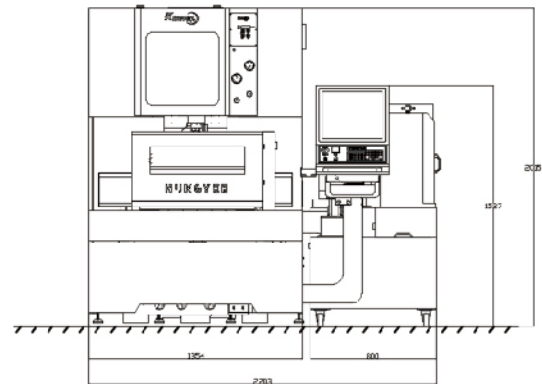




## Company Introduction:

Over the past twenty years (2001-2021), we have honed our skills and accumulate outstanding talents from CHMER, the Japanese and European industries and advanced technology. Under the joint efforts of the team, we strive for customer satisfaction, employees well being and happiness as an enterprise platform. We are focusing on customers, moving customers, protecting employees and maintaining sustainable business operations. In the future, our Kmway WEDM team will continue to develop stable, precise and efficient high performance, slow moving wire cutting machines for the international market.

Salute to the former Soviet Union's Lazarunko couple(1960)for inventing the world's first electric spark slow wire cutting machine.



### ► Cleaning water gun

High homework washing water gun

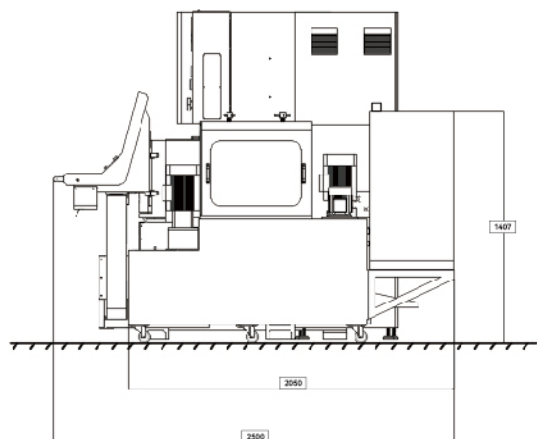
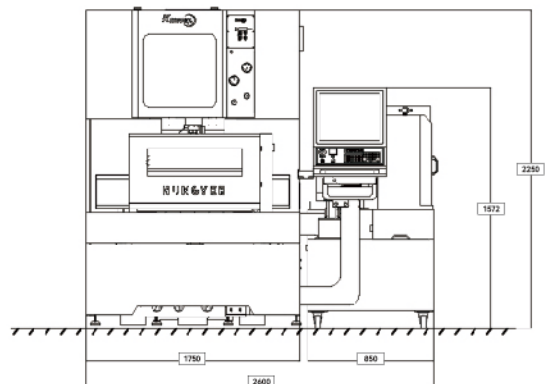
### ► Horizontal operating table

Intuitive operation of standard 19 inch horizontal operating table

Ergonomic design, easy to learn and operate, high affinity and clear and concise human-machine interface

Project	Unit	EK430F		EK430S	EK430L
Axis Travel (X,Y,Z)	mm	400×300×220			
Axis Travel ( U,V)	mm	60×60			
Max. Size of Workpiece (W,D,H)	mm	725×600×215			
Max. Weight of Workpiece	kg	500	350		
X · Y Feed Rate	mm/min	max.800			max.1800
Axis Drive System	asis	X · Y · U · V · Z axis AC servo motor		X · Y axis linear motor/U · V · Z axis AC servo motor	
Wire Diameter Range	mm	Ø0.15-0.3(0.25)			
Wire Tension	gf	300-2500			
Taper Angle	-	±14.5°/80mm(wide-anhled nozzle,DA+DB=15mm)			
Machine Weight	kg	2600	2850		
Processing fluid power system device					
Filtering capacity	L	340	650		
Filtering method	-	paper web			
Water quality control	-	Auto			
Fluid Temperature control	-	Auto			
Processing power supply					
Loop method	-	Power MOS Transistor			
Max. Output Current	A	25			
Setting Unit	mm	0.001			
Max. Command Value	mm	±9999.999			
Appearance Configuration (W,D,H)	mm	2203×2015×2435			
Input power supply		3phase220V±5% 50/60Hz ±1Hz			





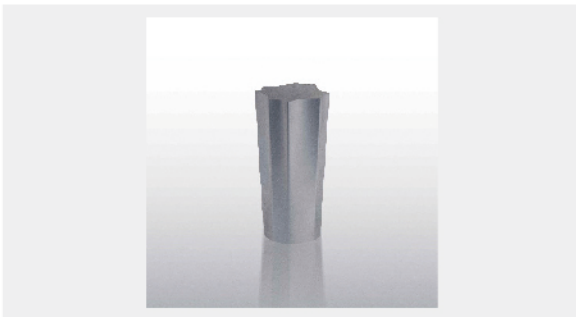
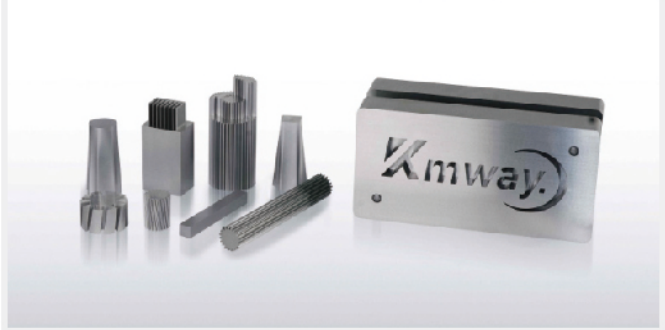
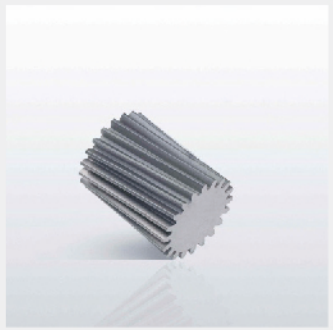
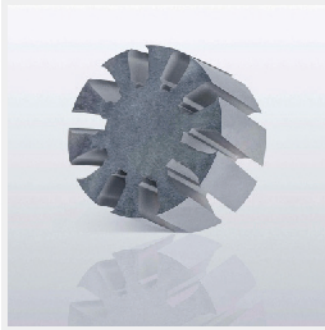
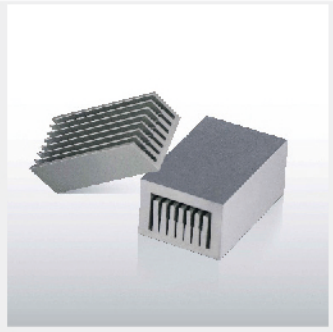
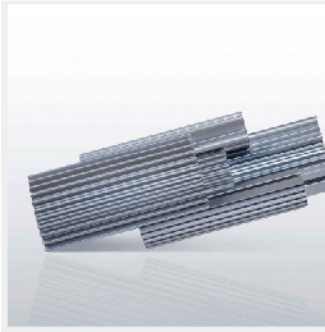
► **Integrated design of mechanical body and electrical control system**

The footprint is small, and the exterior design concept is very beautiful and atmospheric.

► **Optimization design mode for filtration system**

The service life of the filter is greatly extended, which is 3-5 times longer than that of peers and traditional modes.

Project	Unit	EK640S	EK640L
Axis Travel (X,Y,Z)	mm	600×400×300	
Axis Travel ( U,V)	mm	100×100	
Max. Size of Workpiece (W,D,H)	mm	910×700×295	
Max. Weight of Workpiece	kg	450	
X.Y Feed Rate	mm/min	max.800	max.1800
Axis Drive System	asis	X · Y · Z axis AC servo motor/ U · V axis linear motor	X · Y · U · V axis linear motor/ Z axis AC servo motor
Wire Diameter Range	mm	Ø0.15-0.3(0.25)	
Wire Tension	gf	300-2500	
Taper Angle	-	±21°/100mm(wide-anhled nozzle,DA+DB=15mm)	
Machine Weight	kg	3600	
Processing fluid power system device			
Filtering capacity	L	760	
Filtering method	-	paper web	
Water quality control	-	Auto	
Fluid Temperature control	-	Auto	
Processing power supply			
Loop method	-	Power MOS Transistor	
Max. Output Current	A	25	
Setting Unit	mm	0.001	
Max. Command Value	mm	±9999.999	
Appearance Configuration (W,D,H)	mm	2600×2500×2250	
Input power supply		3phase220V±5% 50/60Hz ±1Hz	



## Grounding construction:

- 1.To prevent electromagnetic interference and leakage, please follow the third class construction (grounding resistance below  $10\Omega$ ) specified in the electrical collection equipment standard and separate grounding from other machines.
- 2.Use a  $14\text{mm}^2$  independent grounding wire.

## Space requirements:

When positioning the machine, it is advisable to pay attention to the size of the space and consider the movement diagram used in the maintenance and repair manual.

## External environmental requirements:

- 1.Ideal control of air conditioning room temperature:  $23 \pm 0.5^\circ\text{C}$  Humidity: below 75% RH
- 2.Vibration sources near the debris surface of the machine platform placed in the shelter (maximum amplitude of vibration at a frequency of 10-20 HZ)  $\mu\text{m}$  Within m) or source of energy for street climbing
- 3.Avoid placing the machine in direct sunlight exposure to the mouth
- 4.Avoid placing the machine near the thermal treatment or electroplating factory, as the controller is a precision electronic device that is susceptible to invasion and contact
- 5.Avoid placing the machine in a dusty environment, which can easily affect the machine body and components

## Recruitment Of Global Agents And Sales Elite

### Kmway (Zhejiang) Intelligent Technology Co., Ltd

Headquarters Company Address: Room501, Unit 1, Building 11, No. 489 Hongtai 6th Road, Hongkeng Farm, Economic and Technological Development Zone, Xiaoshan District, Hangzhou City

Production factory address: Building 1, Wanma Zhizao Industrial Park, Xinshi Town, Deqing County, Huzhou City, Zhejiang Province

✉ kmwayedm@163.com

🌐 www.kmwayedm.com

Tel: 0571-82608736

Tel: 139 8985 6217

Agent:



Our company is constantly conducting research and improvement work, therefore we reserve the right to change the design, specifications, dimensions, and mechanical structure at any time

Thanks to CHMER for technical support and authorization!